



Location:
Lisbon, Portugal
地址:
葡萄牙里斯本

ADVENTURE'S PARK ROUNDABOUT

冒险乐园回环道

■ **Architecture and Fountain Design**

景观及喷泉设计

- João Branco
web:www.pluriescala.com

■ **Photographer**

摄影师

- Silvestre Zamith

■ **Water Features Consultant**

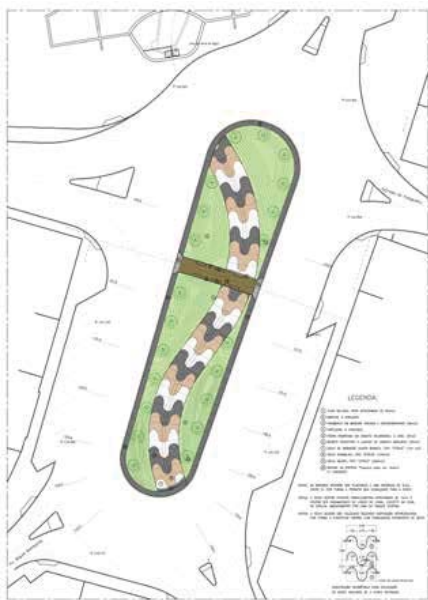
喷泉设计公司

- GHESA
web:www.ghesafuentes.com

This fifty six meters long water feature extends along the Adventure's Park roundabout in a sinuous line of pulverization water with 1,20m height, illuminated with three different colors: green, blue and red. The sinuous shape is an allusion to Falagueira's river which, in the past, flowed in this same place and now runs inside of a tube, under the fountain.

这项五十六米长的水体景观沿着冒险乐园的回环道蜿蜒曲折，上面布满了高 1.2 米的雾化水气，绿、蓝、红三色雾灯透过水气向外射出光线。水体景观蜿蜒流淌的轨迹，正是当时法拉圭拉河流淌的河道，而现在这条河则通过埋在喷泉下面的管道流通。





To recover and recycle the pulverized water, a wet zone was created along the pulverization line, six meters width, draining to a reservoir which reintroduces it into the system. As decoration and demarcation of the area, the use of pebble was adopted in three different tonalities.

为了收集喷出的水雾并将其循环利用，设计师在水雾区的沿线设置了一块六米宽的湿润地带，将水雾收集到一个蓄水池，然后蓄水池再将水重新引导回水雾喷射系统。为了装饰及作为景观各区域的分界线，设计师采用了三种不同颜色的鹅卵石进行铺装。

